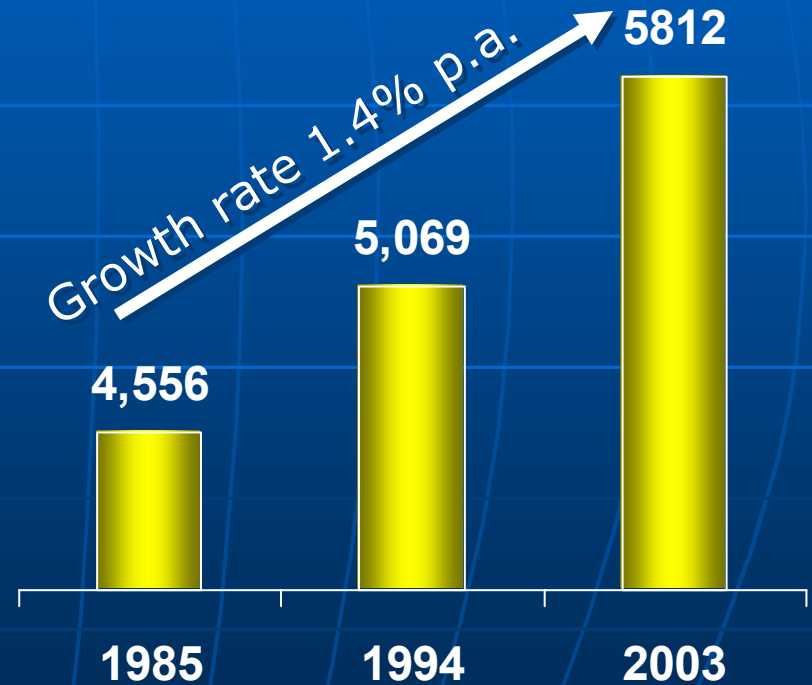


# World food needs continue to grow

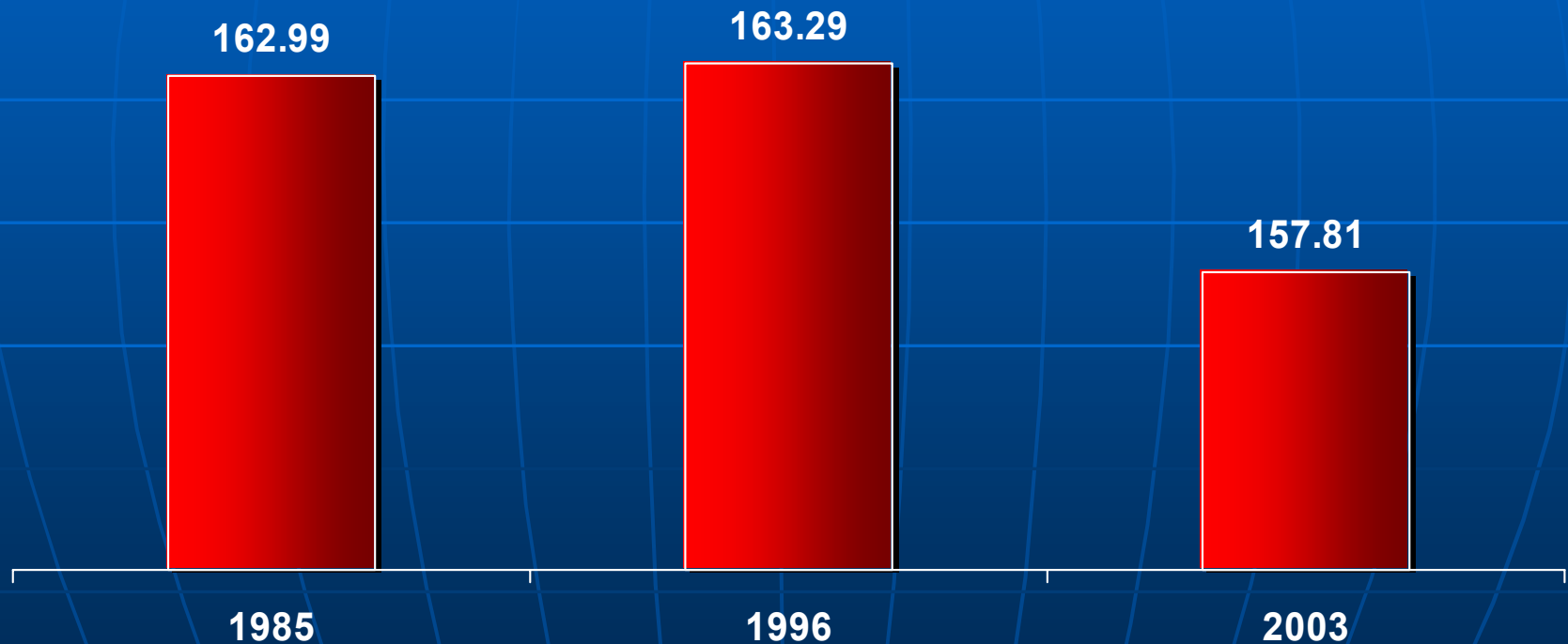
**World Population  
(Millions)**

**World Per Capita  
GDP:(1995 USD)**



# As incomes grow, the diet contains less starch,

World Food Grain Per Capita Consumption:(kg)  
(Rice and Wheat)

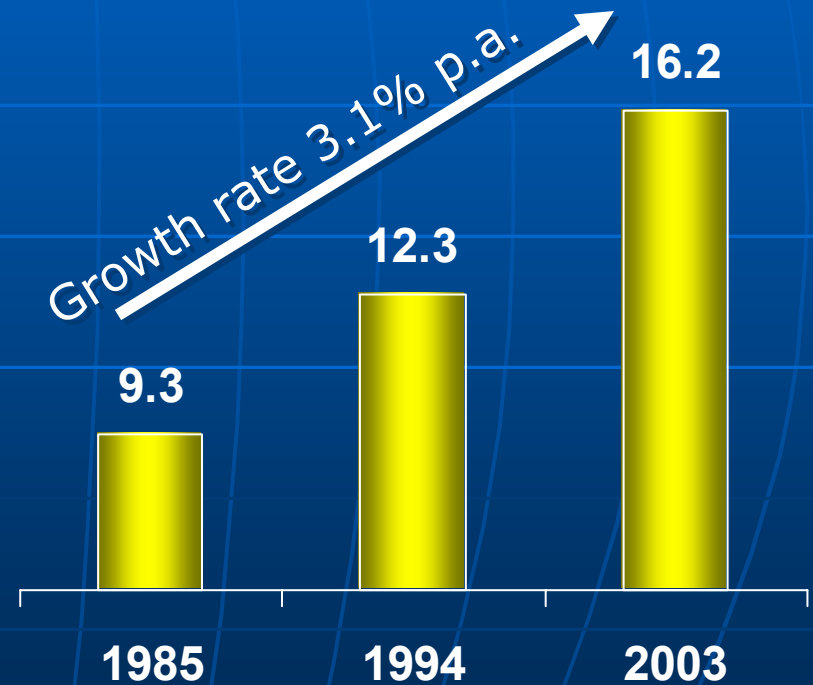


# And more protein and fat

**World Per Capita Meat Consumption (kg)**

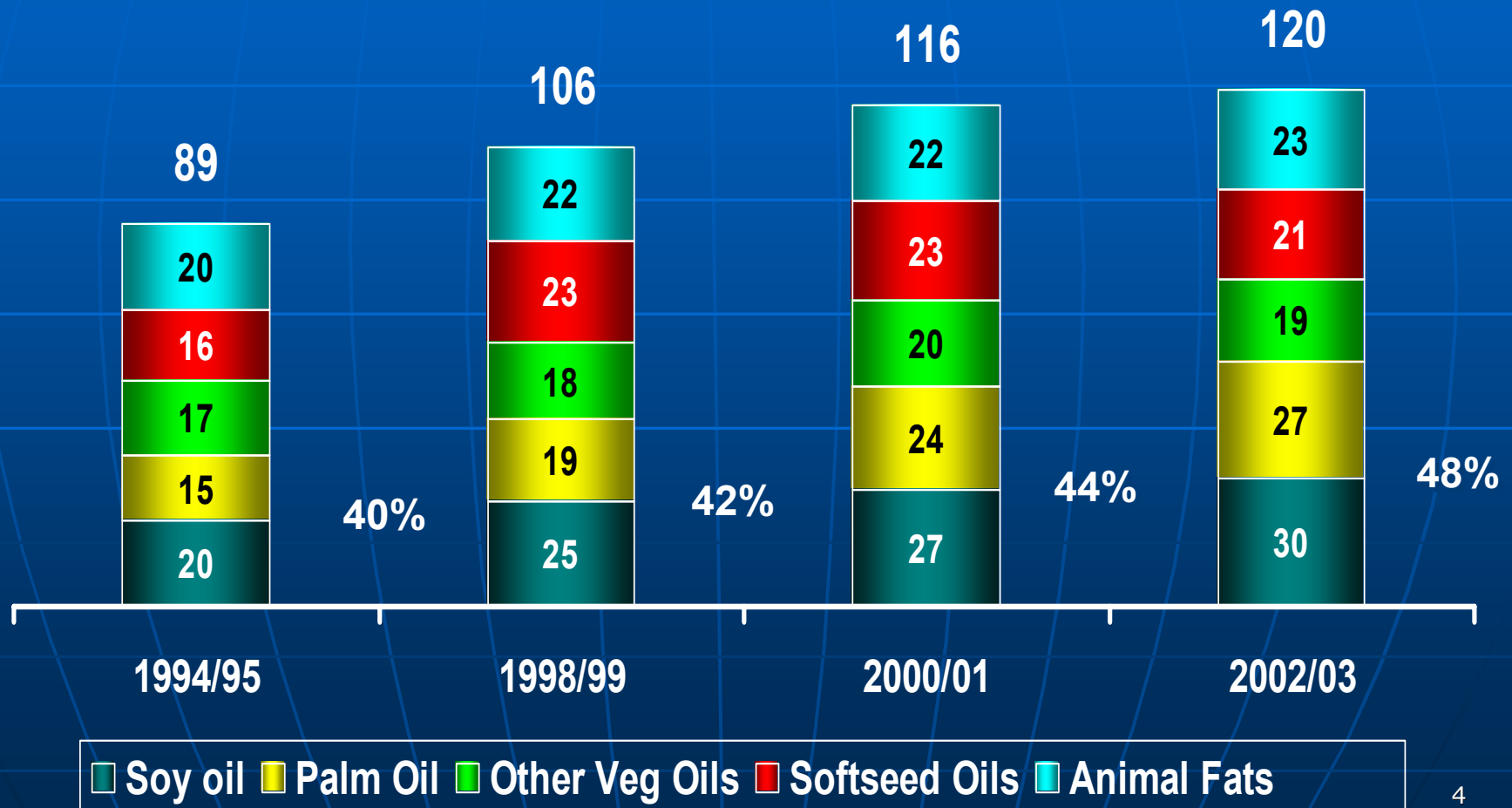


**World Per Capita Veg-oil Consumption (kg)**



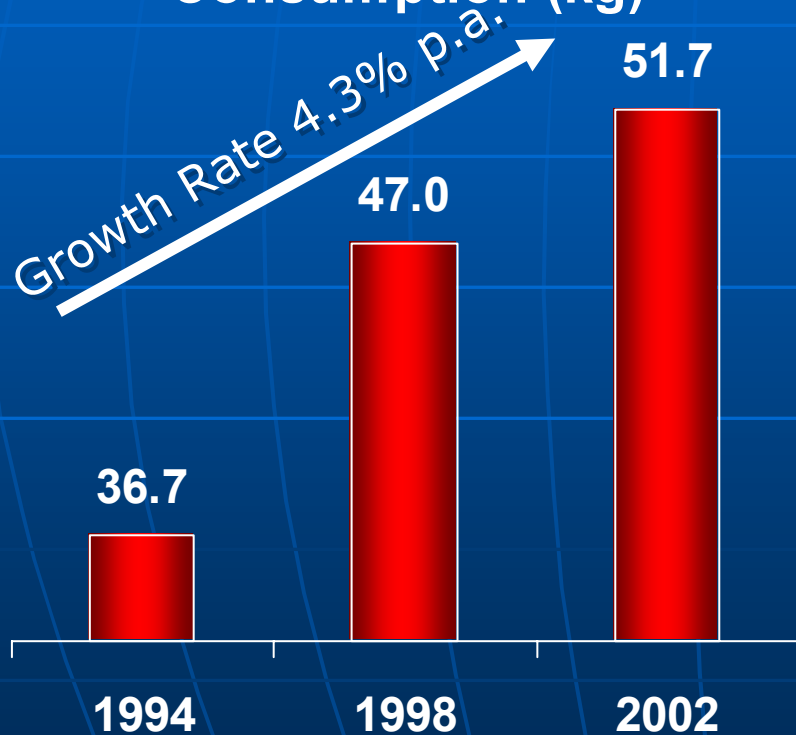
# Soy and palm share is increasing

Animal Fats & Vegetable Oil Production by Class (mmt)

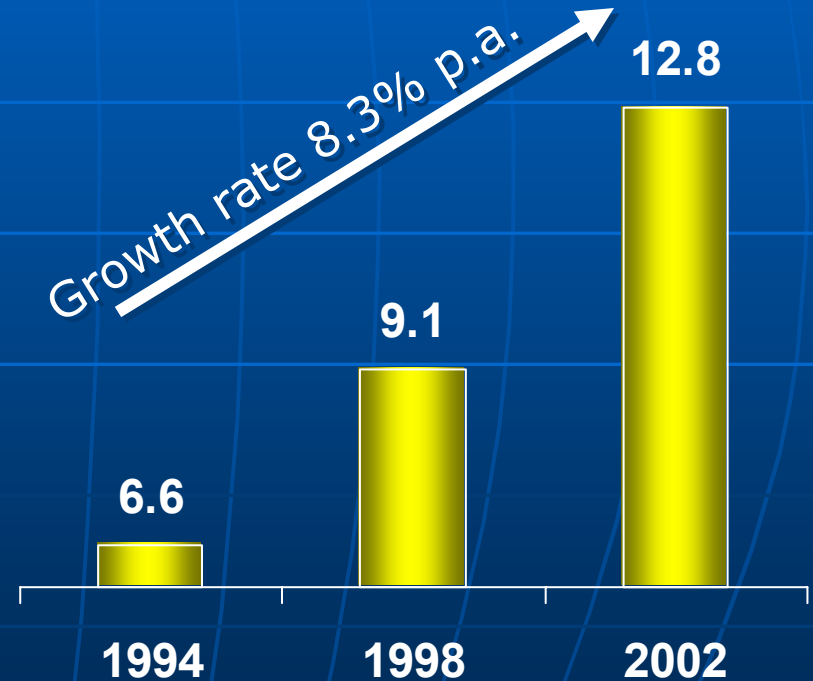


# Chinese per capita meat and vegetable consumption

Chinese Per Capita Meat Consumption (kg)

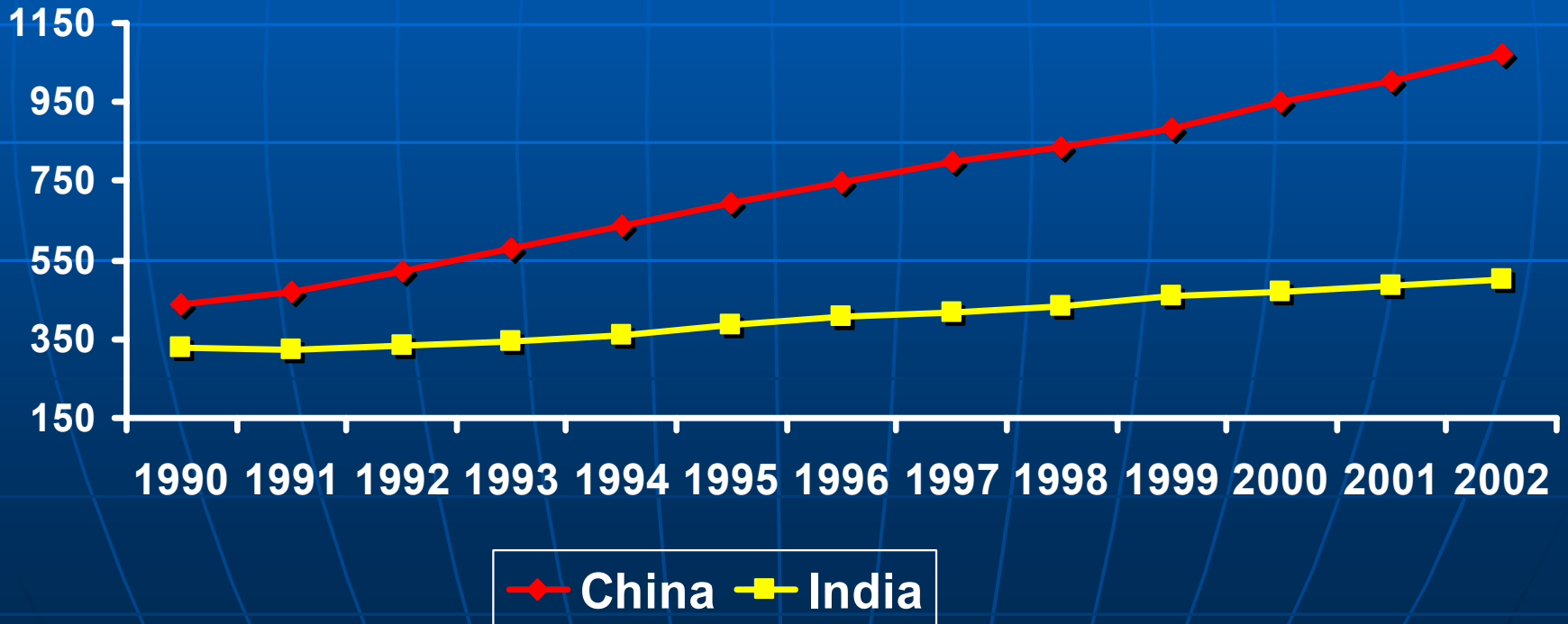


Chinese Per Capita Vegetable Consumption (kg)

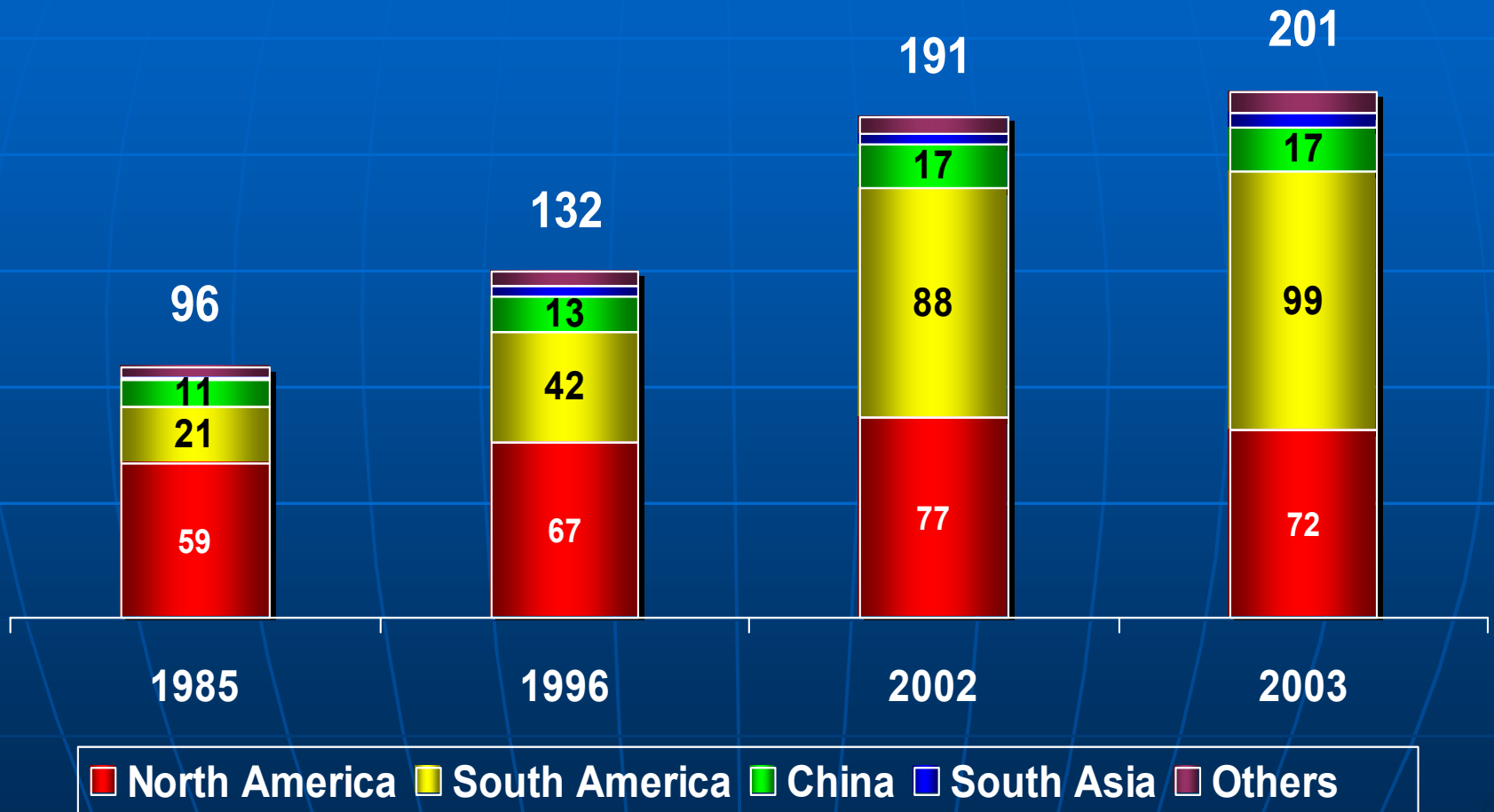


# India: the next China?

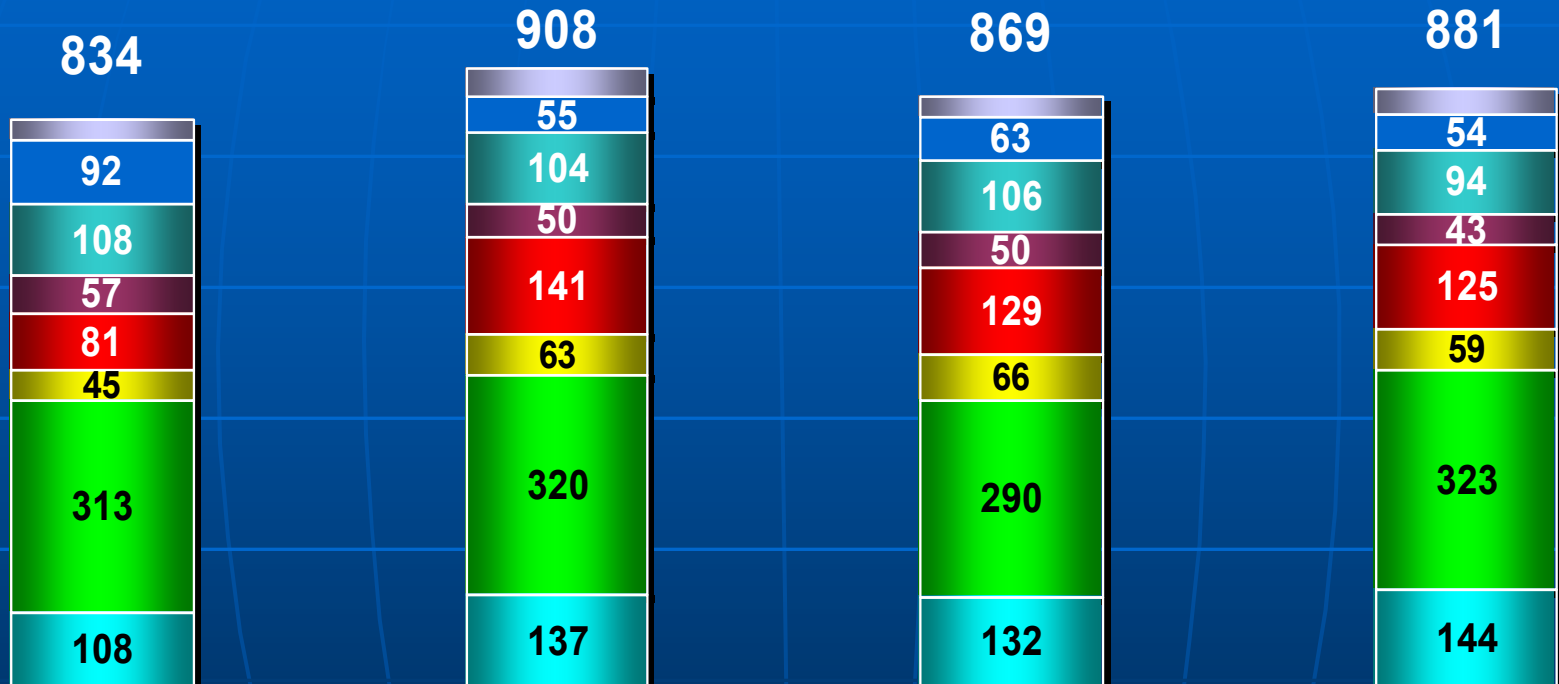
Per Capita GDP (1995 USD)



# World soybean production



# North American maintains share of feed grain production



1985

1996

2002

2003

Others

North America

South America

China

Eastern Europe

European Union

Former Soviet Union

South Asia

World